

COMMON EQUITY

E-BULLETIN

1 JUN 2020

THE CO-OPERATIVES FEDERATION 2020 CO-OPS NSW CONFERENCE CANCELLED

Due to recent bush fires, flooding and drought, together with the current health crisis of the COVID-19 pandemic, The Federation has made the difficult decision to cancel their 2020 conference scheduled for June. The conference is being planned to take place in 2021.

To keep up to date, check the Events page on their [website](#).

COVID-19 UPDATE

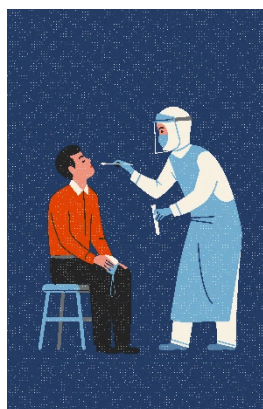
Upcoming changes

From today, **Monday 1st June 2020** the following will be allowed:

- travel to regional NSW for a holiday
- visits to museums, galleries and libraries
- up to 50 customers in pubs, clubs, cafes and restaurants
- treatments can begin in beauty and nail salon operators under strict COVID-safe guidelines



Social / physical distancing rules still apply – keep a minimum 1.5 meters from others and keep practicing good personal hygiene (wash your hands!)



Get Tested

Get tested even if you have mild symptoms. Symptoms include fever, cough, sore throat, trouble breathing. Official symptoms have been updated to also include loss of smell and taste.

Get tested then stay at home, self-isolate.

[Here is a list of testing clinic locations.](#)

If you think you have COVID-19 or you have a question related to your health, you can speak to a nurse by calling 1 800 020 080 or go to www.healthdirect.gov.au

GP Visits

NSW Health has noted a drop in people visiting their General Practitioners (GP's) and other health professionals.

No matter what health concerns you have, it is still safe to visit your GP or mental health provider to get the care you need. Don't delay looking after your health and wellbeing because of COVID-19.



MyAus COVID-19 app

The Migrant Council Australia (MCA) has developed a multilingual resource for linguistically diverse communities about COVID-19. The app is available in a range of languages including English, Chinese, Punjabi, Spanish and Vietnamese. Download from your mobile app store.

[Find out more.](#)

FREE ONLINE MENTAL HEALTH TRAINING

This training resource is aimed at those in the workplace, however there is a lot of helpful information on taking care of your mental health generally and identifying warning signs that someone else might need help. Developed by the Black Dog Institute.

Click [here](#)

THE #plateitforward CHALLENGE

#plateitforward is a meal provision initiative, targeted at the more vulnerable members of our community during the COVID-19 pandemic. Currently, it is a partnership between Mission Australia and the Columbo Social. They are looking to expand and bring more restaurants and charities on board.

The project kickstarted 6 weeks ago and they have managed to donate over **11,500 meals** to those identified as the most at risk during the COVID-19 pandemic. The kitchen cooks high quality and nutritious meals Monday-Friday, and then they are picked up or delivered by volunteers to different agencies working to feed Sydney's vulnerable.



Volunteers required: They are looking for more volunteer drivers to deliver meals to the agencies that are distributing the food, as well delivering meals to at-risk individuals who are not supported or connected to any of these agencies. Drivers must have their own vehicle and licence and adhere to

social distancing and food safety policies when delivering. This is currently in the expression of interest phase. They use Be Collective to log volunteer hours so that drivers can record their hours.

They would also like to connect directly with more people who are in need of meals.

They are currently distributing meals throughout Sydney and the Greater Sydney area.

For more information contact mayura@colombosocial.com.au

RESILIENT AUSTRALIA AWARDS

Submissions close 16 June 2020

The Resilient Australia Awards is a nation-wide program to recognise and promote initiatives that strengthen community disaster resilience. Since 2000 the awards have showcased innovation and exemplary practice across Australia, celebrating achievements that might otherwise go unseen. Submissions are judged in their state or territory, and winners are then considered for national awards.

Categories are:

Business Award

Community Award

Government Award

Local Government Award

Photography Award

Schools Award.

For more information on the awards and to submit your project click [here](#)

You can nominate a project that you believe has demonstrated resilience in action (eg has your local council provided new ways to support your community in recent times; has your local school excelled in supporting learning from home?). Just complete the nomination form [here](#)

CREATE NSW

\$50 million Rescue and Restart package announced

COVID-19 Initiatives are targeted at addressing the impact on the arts and cultural the sector.

Opportunities exist to support the creation of new work, adapt current work to digital platforms and to engage with audiences through online portals and to develop events and activities for when restrictions are lifted

For more information on the COVID-19 support package click [here](#) or email sector.support@create.nsw.gov.au

For information on their other grants and funding initiatives click [here](#)

NEW CENSW TENANT HANDBOOK



CENSW recently updated its Tenant Handbook. It contains a huge range of useful information including:

- What CENSW does
- Tenant rights & responsibilities
- Rent & other charges
- Your home / property: repairs and maintenance & responsibilities
- Modifications
- Tenancy matters including visitors, pets, tenancy breaches
- Tenant engagement Appeals, compliments and complaints

Access the Handbook on our [website](#).

If you would like a hard copy please email: cdt@commonequity.com.au

THERMAL COMFORT UPGRADES PROJECT

Top Tips Energy Saving Posters

Keep an eye out for these posters that are being mailed out for you to place on noticeboards or common areas. These are being distributed as part of our Thermal Comfort Upgrades Project.

A PDF of the poster can be found [here](#).

Common Equity NSW acknowledges the funding support from the NSW Government as part of the Home Energy Action Program.



This email bulletin is printable and meant for all members, so please feel free to share it with others.

COMMON EQUITY CONTACT DETAILS

Team	Email Address	
Co-op Development Team	cdt@commonequity.com.au	
Maintenance Team	maintenance@commonequity.com.au	
Finance	finance@commonequity.com.au	
Staff	Role	Contact
Nick Sabel	CEO	02 9356 9200
Stephen Wardrop	Property Manager	02 9356 9220
Joanna Wong	Finance Manager	02 9356 9221
Prema Menon	EA to CEO	02 9356 9212
Poppy Whiting	Senior Projects Manager	02 9356 9224
Mirjana Kreiselmaier	Co-op Development Manager	02 9356 9210
Corine Addison	Operations Manager	02 9356 9288
Maintenance Out of Hours Emergency		0432 664 486

We acknowledge the traditional Aboriginal owners of the country throughout Australia and pay our respects to them, their culture and their Elders past, present and future.

Image credits:

Man in facemask : Photo by Arya Pratama on Unsplash

Covid Testing: Photo by United Nations Global Call Out To Creatives on Unsplash

Mobile phone in crowd: Photo by ROBIN WORRALL on Unsplash

Kitchen: Photo by Timur Saglambilek from Pexels

Lightbulb: Photo by Burak K from Pexels

Copyright © 2020 Common Equity NSW, All rights reserved.

Our mailing address is:

PO Box Q1323, Sydney, NSW 1230

Want to change how you receive these emails?

You can [update your preferences](#) or [unsubscribe from this list](#).